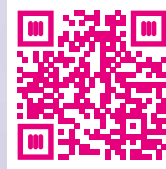




COVE TR50/120 (WHITE 9016)

TECHNICAL INFORMATION

Wall to front face = **90-95mm**
 Wall to pipe centres = **50-55mm**
 Standard connections **1/2"**



FOR MORE INFORMATION



* See pages 57-62 for Accessories

COVE TR

MODEL	HEIGHT (mm)	WIDTH (mm)	PIPE CENTRES (mm)	WATTS Δt 50°C	BTUs Δt 50°C	ELEMENT WATTAGE REQUIRED	WHITE 9016 (ex VAT)	ANTHRACITE TEXTURE 7016 (ex VAT)	COLOUR / FINISHES (ex VAT)	WEIGHT (kgs)
COVE TR - CENTRAL HEATING										
COVE TR50/80	826	500	450	410	1399	600	£166	£166	£268	10
COVE TR50/120	1120	500	450	550	1877	900	£203	£203	£304	13
COVE TR50/150	1535	500	450	700	2388	900	£279	£279	£380	16

All prices in **White** next working day

MODEL	ELECTRIC AND DUAL FUEL OPTIONS (ADD COST TO PRICE OF TOWEL RAIL)	CP (ex VAT)
DF-E	Dual fuel supplied with Essential Element & T-Piece	£71
DF-T	Dual fuel supplied with Thermostatic Element & T-Piece (TEC)	£115
EO-E	Electric only towel rail, pre-filled with Essential Element	£125
EO-T	Electric only towel rail, pre-filled with Thermostatic Element (TEC)	£206

Available Finishes



WHITE 9016

Lead Time: Next working day



ANTHRACITE TEXTURE 7016

Lead Time: Next working day



RAL COLOURS/FINISHES (Details page 63)

Lead Time: 7-10 working days



MILD STEEL



ALL STOCKED ITEMS
NEXT WORKING DAY



5 YEAR
GUARANTEE



OPTIONS CENTRAL HEATING/
ELECTRIC/DUAL FUEL